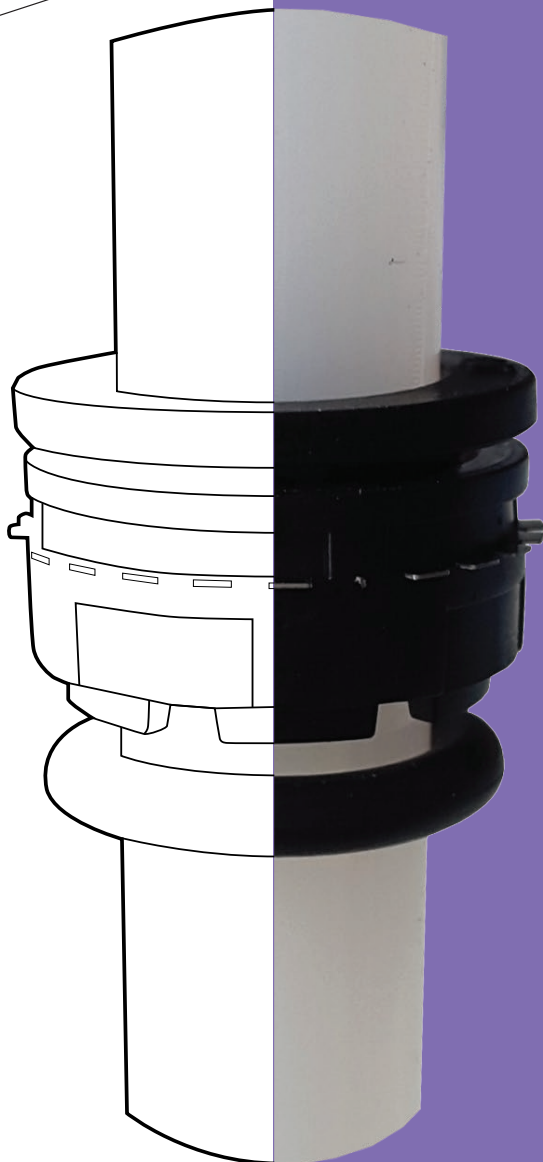


# CARTRIDGES





P. 95 /  
CARTRIDGE CDC PNEUMATICS

---



P. 97 /  
FLUIDFIT CARTRIDGES

---

# TECHNICAL INDEX



# CARTRIDGES

## CDC

## PNEUMATICS

### PLUS

**SAVING IN ASSEMBLING TIME  
THANKS TO THE DEDICATED SLOT**

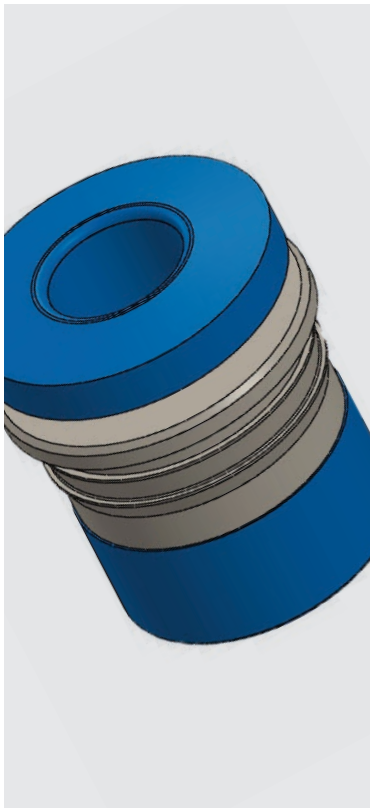
**IMMEDIATE CONNECTION TO THE TUBE**

**FULL PASSAGE**




p. 96 / **CAS**







 0°C ÷ 60°C

 Working pressure:  
10 Bar  
Negative pressure:  
-750 mmHg

 Compressed air

 Polyamide, Polyurethane

 **Body:** nickel plated brass  
**Lock claw:** AISI 301 stainless steel  
**Seal:** NBR  
**Collet:** POM

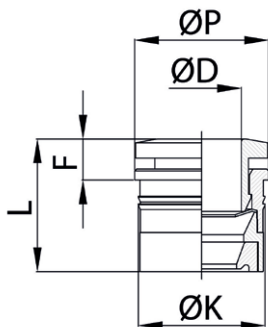
 **REACH**  
Products in compliance with  
the directive 2002/95/EC

**RoHS2**

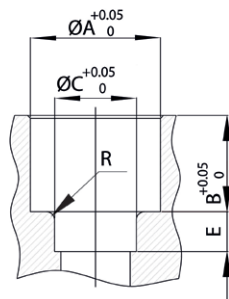
Products in compliance with  
the directive 2011/65/EU

**CAS**

Cartridge



CODE	ØD	ØK	ØP	F	L	GR.
CAS04	4	9,0	10,0	3,55	11,25	1,0
CAS06	6	11,15	12,0	3,95	12,45	3,0
CAS08	8	13,25	14,0	4,30	13,90	4,0
CAS10	10	15,50	16,0	4,85	15,15	5,0
CAS12	12	17,80	19,0	5,0	17,40	7,0



CODE	ØA	ØC	B	E	R
CAS04	8,8	4,25	7,80	3,0	0,8
CAS06	10,9	6,25	8,60	3,5	0,8
CAS08	13,0	8,25	9,70	4,0	0,8
CAS10	15,2	10,25	10,45	4,5	1,0
CAS12	17,5	12,25	12,50	5,0	1,0



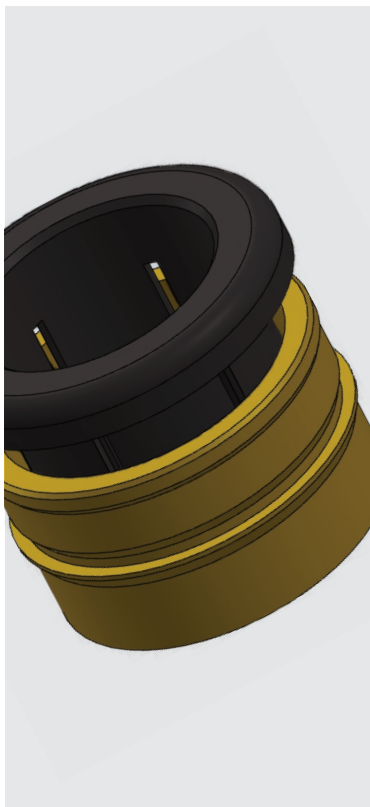
# CARTRIDGES FLUIDFIT

## PLUS

SAVING IN ASSEMBLING TIME  
THANKS TO THE DEDICATED SLOT

IMMEDIATE CONNECTION TO THE TUBE

FULL PASSAGE



Dry air:  $-20^{\circ}\text{C} \div 98^{\circ}\text{C}$   
Air & fluids:  $1^{\circ}\text{C} \div 98^{\circ}\text{C}$



Working pressure:  
20 Bar  
Negative pressure:  
-750 mmHg



Water, beverages, vacuum  
compressed air, gases  
& liquids suitable with  
construction materials



Polyamide, Polyurethane,  
Polyethylene, PTFE, FEP



**Body:** brass  
POM for HCAS-P  
**Collet/Lock claw:** POM  
**Seal:** EPDM



Products in compliance with  
the directive 2002/95/EC

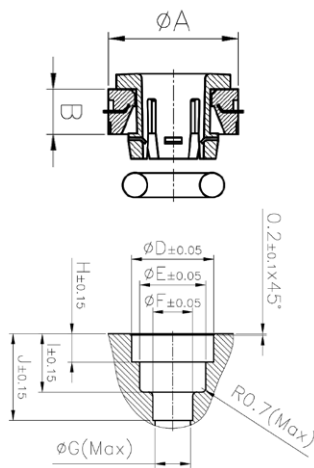
**RoHS2**

Products in compliance with  
the directive 2011/65/EU



### HCAS-P

Plastic cartridge

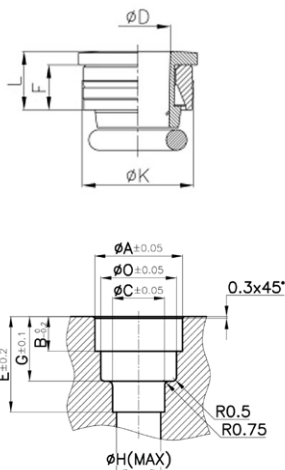


CODE	ØTUBE	ØA	B	GR.
HCAS-P 04	4	11,85	5,0	0,9
HCAS-P 06	6	13,30	4,6	1,4
HCAS-P 08	8	13,70	5,6	2,9
HCAS-P 10	10	15,90	6,9	3,2
HCAS-P 12	12	19,60	7,9	4,1

CODE	ØTUBE	ØD	ØE	ØF	ØG	H	I	J
HCAS-P 04	4	12,00	8,30	4,15	3,30	4,90	8,90	12,80
HCAS-P 06	6	13,40	10,00	6,15	5,30	4,60	9,80	14,00
HCAS-P 08	8	13,80	11,95	8,15	7,40	5,50	10,15	15,00
HCAS-P 10	10	16,05	14,00	10,15	9,20	6,90	11,80	18,20
HCAS-P 12	12	19,75	16,55	12,15	11,20	7,75	15,90	23,90

### HCAS-H

Half cartridge

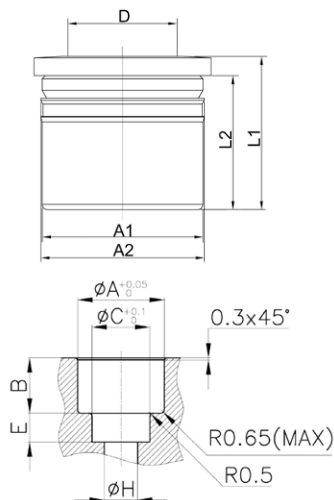


CODE	ØD	ØK	F	L	GR.
HCAS-H04	4	12,70	5,3	6,8	4,2
HCAS-H06	6	13,60	5,0	6,6	3,9
HCAS-H08	8	14,05	5,7	7,4	3,5
HCAS-H10	10	16,30	7,0	8,8	5,0
HCAS-H12	12	19,35	8,8	10,8	9,0

CODE	ØA	ØC	ØH	B	E
HCAS-H04	12,5	4,2	3,3	4,90	12,8
HCAS-H06	13,4	6,2	5	4,60	14,0
HCAS-H08	13,82	8,2	7	5,46	15,0
HCAS-H10	16,05	10,2	9	6,86	18,2
HCAS-H12	19,1	12,2	11	8,65	23,5

### HCAS-F

Full cartridge



CODE	ØD	ØK	F	L	GR.
HCAS-F04	4	10,20	10,5	12,0	3,8
HCAS-F06	6	11,25	11,0	12,6	3,2
HCAS-F08	8	13,25	11,5	13,2	3,9
HCAS-F10	10	15,25	12,5	14,3	4,7
HCAS-F12	12	17,80	14,8	16,9	7,2

CODE	ØA	ØC	ØH	B	E
HCAS-F04	10,0	4,15	3,2	10,3	3,2
HCAS-F06	11,0	6,15	5,2	10,8	3,7
HCAS-F08	13,0	8,15	7,2	11,3	4,8
HCAS-F10	15,0	10,15	9,2	12,2	5,4
HCAS-F12	17,5	12,15	11,2	14,1	7,3

